

SARAOGI SHELLAC GROUP

**STICKLAC SEEDLAC SHELLAC
ALEURITIC ACID AMBRETTOLIDE**



Our Participations



IFEAT DUBAI 2016



FAFI 2017



SIMPAR PARIS 2017



IFEAT ATHENS 2017



WPC NICE 2018



IFEAT CARTAGENA 2018

Who we are

Saraogi shellac is one of the leading Manufacturing Exporters of LAC and SHELLAC based products from India.

We have been in business for the past 24 years and have successfully upgraded from scratch to an institution having high market power worldwide.

Our team includes highly trained and experienced professionals who ensure the successful procurement of best quality raw materials and turning the inputs into outputs of the finest grade.

Our goal is to provide the customers with goods of highest grade so as to maximise customer satisfaction.

Our dedication and excellence in this field has awarded us with the prestigious "STAR EXPORT HOUSE" certificate since 2004 and is still maintained successfully every year.

GLOBAL DISTRIBUTION



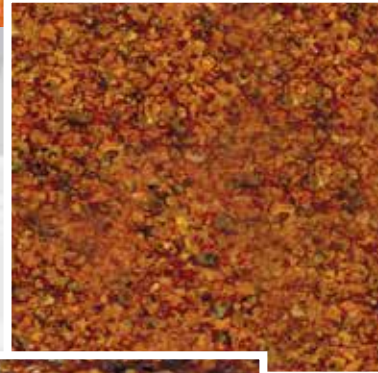
Seedlac

Seedlac is derived from Sticklac and can be described as the basic raw material for all types of Lac based products.

Golden Kusmi Seedlac



Kusmi Seedlac – 5%



**Manbhum Fine
Bysakhi Seedlac**



**5% Ordinary
Bysakhi Seedlac**



***Lac Based Production in
Tradition with new ideas***

Hand Made Shellac

This Handmade Shellac is an art that is slowly dying in this industrial revolution. Team Saraogi Shellac has kept this ancient tradition alive and has promoted the use of this form of Shellac which is made by hand by skilled shellac makers.

We specialize in Hand Made Lemon No.1 Shellac & Superior Kusmi Lemon Shellac.



**Hand Made Lemon
No.1 Shellac**



**Superior Kusmi
Lemon Shellac**

SHELLAC

Machine Made Shellac

This Shellac is most commonly used Shellac in the world, this Shellac is produced using industrial machines and heavy rollers, this has revolutionised the trade in late 70's and early 80's, Team Saraogi Shellac has further refined the process to make the best quality Shellac from selected materials.

**Machine Made
TN Shellac Flakes**



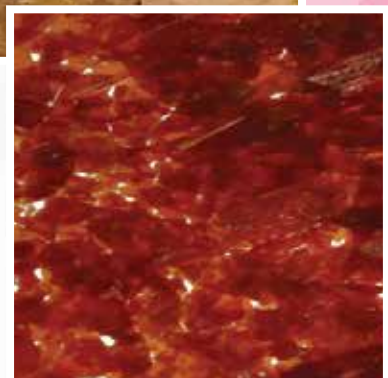
**Machine Made
Lemon Shellac**



**Machine Made
Orange Shellac**



Standard One Shellac

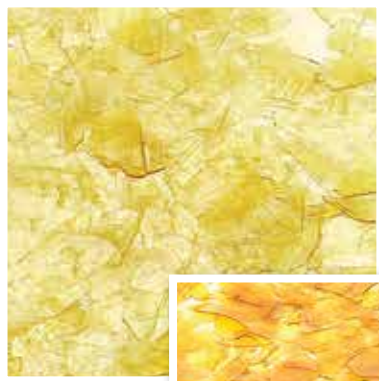


SHELLAC

*Lac Based Production in
Tradition with new ideas*

Dewaxed Decolorised Flake Shellac

We also have colourless and wax free Shellac that can be used in Pharmaceutical industries, we also have Dewaxed Decolourised Flakes Shellac with colours as required by our customers.



Dewaxed Platina Shellac



**Dewaxed Super
Blonde Shellac**



Dewaxed Blonde Shellac



**Dewaxed
Orange Shellac**



Dewaxed Garnet Shellac

SHELLAC

Powdered Shellac

Saraogi Shellac has this type of Shellac to cater to the very specific food industry that had a long standing problem of keeping the fresh fruits fresh for a long time, the Shellac that can used as coating for fruits and reduces weight loss makes fruit bacteria disinfectant, this also helps to preserve the fruit for a longer period of time.



**Dewaxed Bleached
Powder Shellac**



**Waxy/Waxed Bleached
Powder Shellac**

Aleuritic Acid

This is a product which has revolutionize the Shellac industry, Aleuritic Acid. It is obtained from seedlac by saponification and several filtration processes.

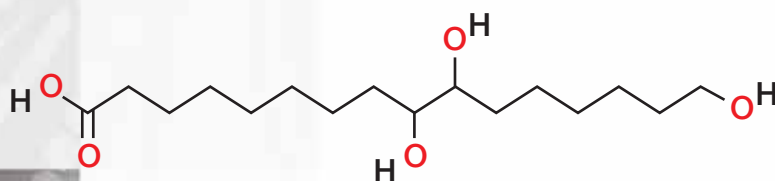
Aleuritic Acid (9, 10, 16 - Trihydroxy Palmitic Acid) is a unique acid containing three hydroxyl groups of which two are of adjacent carbon atoms.

Aleuritic acid is an excellent starting material for synthesis of Macro-cyclic perfumery compounds (ambrettolide, iso-ambrettolide, civetone, dehydriocivetone, exaltone, glucose manoaleuritate and related lactones).



Aleuritic Acid

Molecular Formula



**Aleuritic Acid
(9, 10, 16-Trihydroxy palmitic Acid)**

SHELLAC

Shellac- The Versatile Natural Talent

Shellac in the Food Processing Industry

Shellac in the food processing industry is of decisive importance that the natural product, Shellac is safe for human health, Shellac may be used in food processing e.g. in accordance with EG Directive 95/32/EG (>>Miscellaneous Directives<<) as an additive for numerous food and it has GRAS status (Generally Regarded As Safe) according to the USFDA .

Citrus Fruit, Oranges, Apples, Pears, Melons etc. are coated with Shellac which prevents the fruit with drying out and gives the fruit an appetising shine.

Shellac also used in the confectionery industry to coat the product to form a protective layer which prevents loss of moisture, flavour and aroma and also prevents them from sticking together. Gum Bears, Chewing Gums, Pralines and Chocolate drops are coated with Shellac.



***Lac Based Production in
Tradition with new ideas***

Shellac- The Versatile Natural Talent

Shellac in the Pharmaceutical Industry

Shellac is used in the pharmaceutical industry above all, as an enteric coating for tablets and capsules its particular solution qualities are important here. Shellac flakes fulfil the requirements.

Tablets, whose active ingredients are to be released once they have reached the intestine, rely on a protective Shellac coating so that they pass the acidic environment of the stomach intact and dissolve first in the alkaline environment of the intestine.



SHELLAC

Shellac- The Versatile Natural Talent

Shellac in Cosmetic Industry

Shellac is used in the cosmetic industry for its binding, film forming as well as the gloss giving properties which are very crucial, also its outstanding resistance to UV radiation and its compatibility with other polymers and additives make the natural resin into a universal raw material for the world of Cosmetics.

Hair spray, hair setting lotion and conditioner-shampoo bring a satin gloss to hair.

In mascara and eye shadow shellac is used as a binder for colour pigments.

In diverse cosmetics Shellac is used for micro-encapsulating aromatic substances.



SHELLAC

Shellac- The Versatile Natural Talent

Shellac for Paints and Varnishes

Shellac is experiencing a renaissance in the classical application for paint and varnish, the growing environmental awareness of the consumers have brought manufactures back to the natural raw material SHELLAC.

An environmentally appropriate wood lacquer with a shellac base not only prevents hairline splits in wood surface, they absorb moisture and through their elasticity adapt to the working material - their thin but hard protective film highlights the grain of fine woods.

Thanks to Shellac wooden toys for children can be given a safe protective coating.



SHELLAC

Shellac- The Versatile Natural Talent

Shellac for Textile Industry

Shellac is used especially to harden woven and non – woven fabrics.

Finishes containing shellac gives fabric form and stability.

Hats get there durable form from shellac treatment.

Collars retain their intended shape longer using Shellac.

Shellac for Leather Industry

Shellac functions as an adhesive in the leather processing; it is also used as a coating for leather.

Shellac stiffens belts, heels, and shoe tips.

Thanks to Shellac leather can be optimally covered with plastic, aluminium or other metal forms.



*Lac Based Production in
Tradition with new ideas*

Shellac- The Versatile Natural Talent

The list can be extended considerably, Shellac serves as binder for inks and for water colours, functions in various ways as a stripping agent, fixes diamonds during the cutting process and is used as lamp capping cement in the production of incandescent lights, Shellac retains all the qualities of an environmentally appropriate, natural product in every area in which it is used.

Team Saraogi Shellac is sure that new, innovative fields of application for this attractive and versatile raw material will continue to be found.



SHELLAC

CERTIFICATIONS



MEMBERSHIP



SHEFEXIL

Shellac And Forest Products
Export Promotion Council

Lac Based Production in Tradition with new ideas

EXPORT EXCELLENCE CERTIFICATE'S



2008-09



2009-10



2010-11



2011-12



2013-14

**Lac Based Production in
Tradition with new ideas**

Ambrettolide

Our manufacturing unit has been set up with the latest technology for the production process, in accordance with our system and product.

Key Feature's:

Annual installed capacity of 24,000.00 Kgs.

Dedicated In-House Laboratory for Quality Control

Dedicated Warehouse for Rawmaterials & Finished Products

Dedicated manufacturing of Ambrettolide

Clean Room for Packing Finished product

QMS, Environment, Health & safety System in Place



AMBRETTOLIDE

Ambrettolide

Identity

Product Code	#	SSAA-AMB
CAS	#	28645-51-4
EINECS	#	249-120-7
FEMA (U.S)	#	4145
FLAVIS (EU)	#	10.063
Molecular Weight	#	252.39
IUPAC Name	#	Oxacycloheptadec-10-en-2-one

Perfumery Uses

Perfumery, Flavour

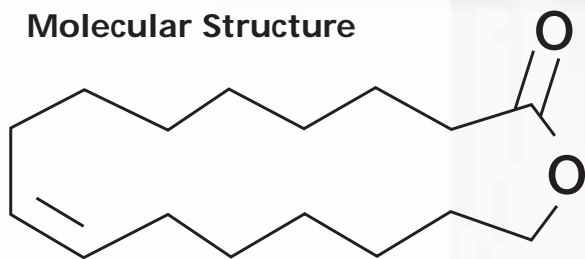
Elegant and Tingling Top Note Musk, Harmonises well with floral Heart notes,

Use Level : 0.1-5%

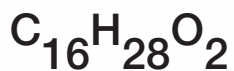
Perfumery Characteristics

Odour Description: Powerful, Musky, Fruity, Floral, sweet, soapy fragrance with a slightly heavy fruity undertone

Molecular Structure



+ Isomers



Ambrettolide

Flavour Characteristics

Flavour Description Musk, Perfumistic Fruity
Usefull in Red Fruit , Yellow Fruit Sweet others

Dosage* : 50 ppb * in 5% sugar Solution

Stability

Fine fragrances	: Very Good
Body lotion	: Very Good
Shampoo / Shower gel	: Very Good
Soap	: Good
Ap Roll on 15%	: Good
Detergent Powder conc.	: Good
Cleaner Liquid Citric Acid	: Good
Cleaner APC Liquid	: Very Good



AMBRETTOLIDE

REACH REGISTRATION



Sustainability Support Services (Europe) AB (SSS)

REACH Registration Submission Report from the Only Representative - SSS

Dated: 29th January 2018

Company: Saraogi Shellac & Aromatics, Kolkata



Downloaded on: 09/02/2018

Reference number: 01-2120103324-74-0004
Reference date: 29/01/2018
Initial submission
Submission number: XH432341-39
Submission status: Complete
Submission date: 29/01/2018

Substance

Substance name	EC number	CAS number
oxacyclichepladec-10-m-2-one	249-129-7	29040-51-4

Dossier type

Tonnage band	On-site isolated intermediate	Transported isolated intermediate
Registration	10-100 tpa	

Joint submission

JS_26645-51-4_SSS	Company role	Registration type
	Member	Full

- This registration will be valid only for the period of agreement between the OR and the client company.
- This registration covers tonnage of the importers officially communicated in buyer's information and export declaration on the company letterhead to SSS from time to time.
- This registration covers only the uses mentioned in section 3.5 of IUCLID dossier and the chemical safety report and OR will be responsible for the same. If new uses need to be added then those should be conveyed to the OR and only after the confirmation from the OR those will be included in this registration
- In case of the tonnage band change same needs to be notified at the earliest so that same can be updated by the OR in the reach IT system, and thus maintain your compliance status. This may though in certain cases, attract additional data cost and ECHA fee

Any further query contact:
Sustainability Support Services (Europe) AB
Markaskälsvägen 6
22647, Lund
Sweden
Email: or@reach-onlyrep.eu

*Lac Based Production in
Tradition with new ideas*

CERTIFICATIONS



AMBERGLO

**SARAOGI
SHELLAC**

MEMBERSHIP



AMBERGLIDE

Saraogi Shellac Group

Key Responsible Personnels



Dinesh Saraogi
CEO



Ritika Saraogi
Director - Management



Ritesh Agarwal
CQO



Pradeep Saraf
Director - Sales (India)



Preyash Saraogi
Marketing & Sales



Jitendra N. Jha
Plant Operations



Ayush Sonthalia
Head Production

AMBERGLO

Saraogi Shellac Group

Support Team



Prasanta Kr. Mukherjee
Documentation (Shellac)



Dipa Saha
Documentation (Ambrettolide)



Sunil K. Gupta
Accounts Head



Ayush Lakhotia
Accounts & General



Rajshekhar Banarjee
Legal & Statutory



Jagdish Singh
Warehouse Head



Rajesh Bari
Warehouse Incharge



Debashish Sarkar
Packaging & Logistics

AMBRETTOLIDE



Manufacturing Facility (Shellac)

Bongabari, Vivekananda Nagar, Purulia
West Bengal-723147, India
www.lacenshellac.com

Ware House (Shellac)

4, Hoobken Shed, Khiddirpore
Kolkata-700 043

Manufacturing Facility (Ambrettolide)

Nh-2, Delhi Road, Vill. & Po. Bamunari
JI No 25, Rishra Gram Panchayat,
Dankuni, Hooghly-712250 (Kolkata)
www.ambrettolide.com

EMERGENCY CONTACT : +91-804-532-2174



www.lacenshellac.com
www.ambrettolide.com

SARAOGI SHELLAC GROUP

Corporate Office

78, Canal Street, East West Apartment
Ground Floor, Shribhumi
Kolkata-700 048, India
Tel : +91-33-25342778 / 9681117830
Fax : +91-33-25210109
Email : info@saraogishellac.com